

## Contents

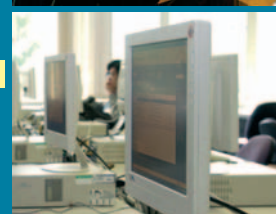
- 2 Threshold concepts and troublesome knowledge in the GEES disciplines  
*John Bradbeer*
- 4 So, what really makes a good GEES lecturer?  
*Paul N. Wright*
- 8 What makes the best learning experience for a student in Geography, Earth or Environmental Sciences  
*Frances Mansfield*
- 8 *Rob Marten*
- 9 *Rob Marten*
- 10 A group resource-based learning approach  
*James O Jenkins*
- 13 Students assessing student: case studies on peer assessment  
*C Philip Wheeler, A Mark Langan and Peter J Dunleavy*
- 16 Experiential learning: assessing process and product  
*David Simm*
- 20 Blended learning? Design and evaluation of a level 3 undergraduate fluvial geomorphology course  
*Tim Stott and David Huddart*
- 26 The e-MapScholar Virtual Placement  
*Sarah Cornelius, David Medycky-Scott, David Forrest, and Andrew Elcock,*
- 29 Hotspot – a computer-based simulation of site investigation of contaminated land  
*John Maskall, Martin Nash and Mike Sanders*
- 33 Building PDP into the curriculum  
*Peter Lumsden*
- 36 Writing geology: key communication competencies for geoscience  
*Dr. Simeon J. Yates, Dr. Noel Williams, Ann-Florence Dujardin*
- 42 Professional status for GEES graduates and academics
- 44 Geography teacher training in Poland  
*Charzynski Przemyslaw and Jolanta Rodzos*
- 46 Management and geography: why not?  
*Petar Slaveykov and Kliment Naydenov*
- 47 GEES Subject Centre News



# Planet

## In this issue

- **Threshold concepts and troublesome knowledge in the GEES disciplines**
- **So, what really makes a good GEES lecturer?**
- **A group resource-based learning approach**
- **Students assessing student: case studies on peer assessment**
- **Experiential learning: assessing process and product**
- **Blended learning? Design and evaluation of a level 3 undergraduate fluvial geomorphology course**
- **The e-MapScholar Virtual Placement**
- **Hotspot – a computer-based simulation of site investigation of contaminated land**
- **Building PDP into the curriculum**
- **Writing geology: key communication competencies for geoscience**
- **Professional status for GEES graduates and academics**
- **Geography teacher training in Poland**
- **Management and geography: why not?**



## Notes for Contributors

*Planet* aims to be of use to practitioners in the GEES disciplines. It has a relatively short submission-to-publication processing time, is free and is disseminated to all GEES departments in the UK, and some overseas. *Planet* is also freely available to download from the GEES Subject Centre website. Hard copy circulation of *Planet* is typically between 2000 and 2500 copies per edition.

The editorial board of *Planet* welcomes material of interest to academics and support staff in the fields of teaching, learning and assessment across the three disciplines of Geography, Earth and Environmental Sciences (GEES). Generic submissions from cognate disciplines and submissions with an international dimension are also invited. *Planet* also welcomes learning and teaching 'work in progress'. Types of contributions include: research papers, notes or short communications, case studies of learning and teaching practice, annotated web-links, software and book reviews, forum commentary, and letters to the editor. Main papers should normally be in the order of 1000-2000 words, although longer articles may be considered.

*Planet* is quality assured through in-house editing by members of the editorial board; papers are not generally externally refereed. Please note that all articles may be subject to minor in-house revisions, without the permission of the author(s).

Authors are requested to:

- make explicit why the work is relevant and important;
- provide an abstract of no more than 150 words;
- have clear headings and signposts;
- draw out learning points for other practitioners in a way that is likely to be useful;
- provide a context for the work (e.g. module names, number of students, year of study, assessment criteria)
- provide evidence of something working, or not. (e.g. student evaluative statements, not just anecdote);
- draw upon other pedagogic literature in GEES (e.g. previous editions of *Planet*, the *Journal of Geography in HE* and the *Journal of Geoscience Education*) - what other studies have been done?
- supplement text with visuals where possible, e.g. tables, maps, figures, photographs and screen-grabs;
- reference the paper in accordance with the Harvard referencing system
- provide contact details, including department(s), institution(s), and email address(es).

All articles with any accompanying figures, tables, diagrams and photographs, should be submitted in electronic format to the Editor, details below.

## Advertising in *Planet*

You can reach all Higher Education academic departments that teach Geography, Earth and Environmental Sciences in England, Wales, Scotland and Northern Ireland. *Planet* is also sent to many Further Education Colleges that offer degree programmes in GEES subjects, as well as all relevant professional bodies, other Higher Education Academy Subject Centres, journalists and other interested individuals and institutions both in the UK and overseas. Circulation of the printed edition is around 2,500 copies and each issue is also published with free access on the GEES website. *Planet* gives free advertising for educational conferences, workshops, meetings and other events as well as for non-profit making products. Advertising rates for commercial products, exclusive of VAT are:

Full page £300 277 x 190 mm

Half page £150 132 x 178 mm

Quarter page £80 132 x 84mm

Inside back cover £500 297 x 210mm

Inserts £100 (2500 copies, size A5 provided by advertiser)

Please send contributions or enquiries to Wendy Miller, *Planet* Editor on 01752 233535 or email: [planet@gees.ac.uk](mailto:planet@gees.ac.uk)